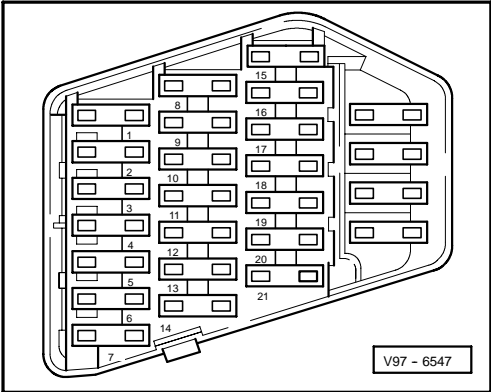


Electrically adjustable and heated exterior mirrors with or without retraction function

Model year 1997

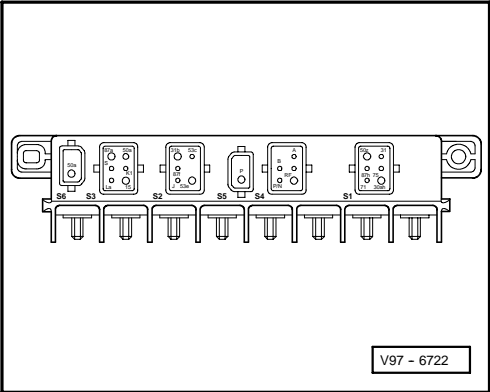
Fuse box



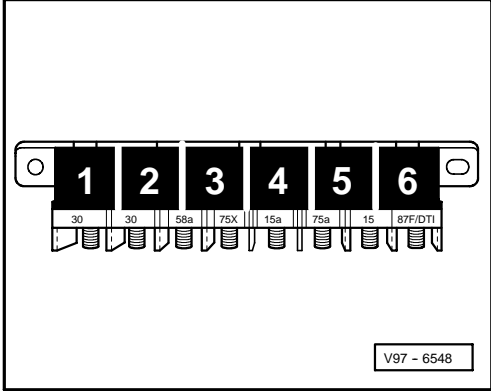
Fuse colours:

- 30 A -green
- 25 A -white
- 20 A -yellow
- 15 A -blue
- 10 A -red
- 5 A -beige

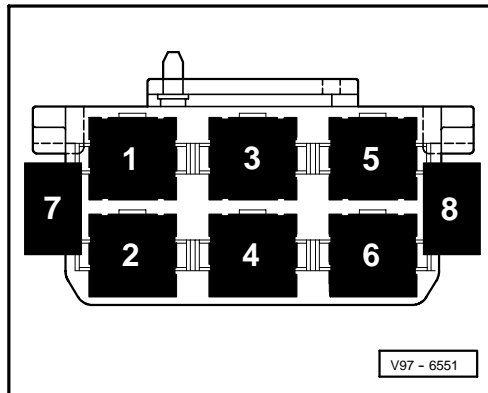
Central electrics - rear side



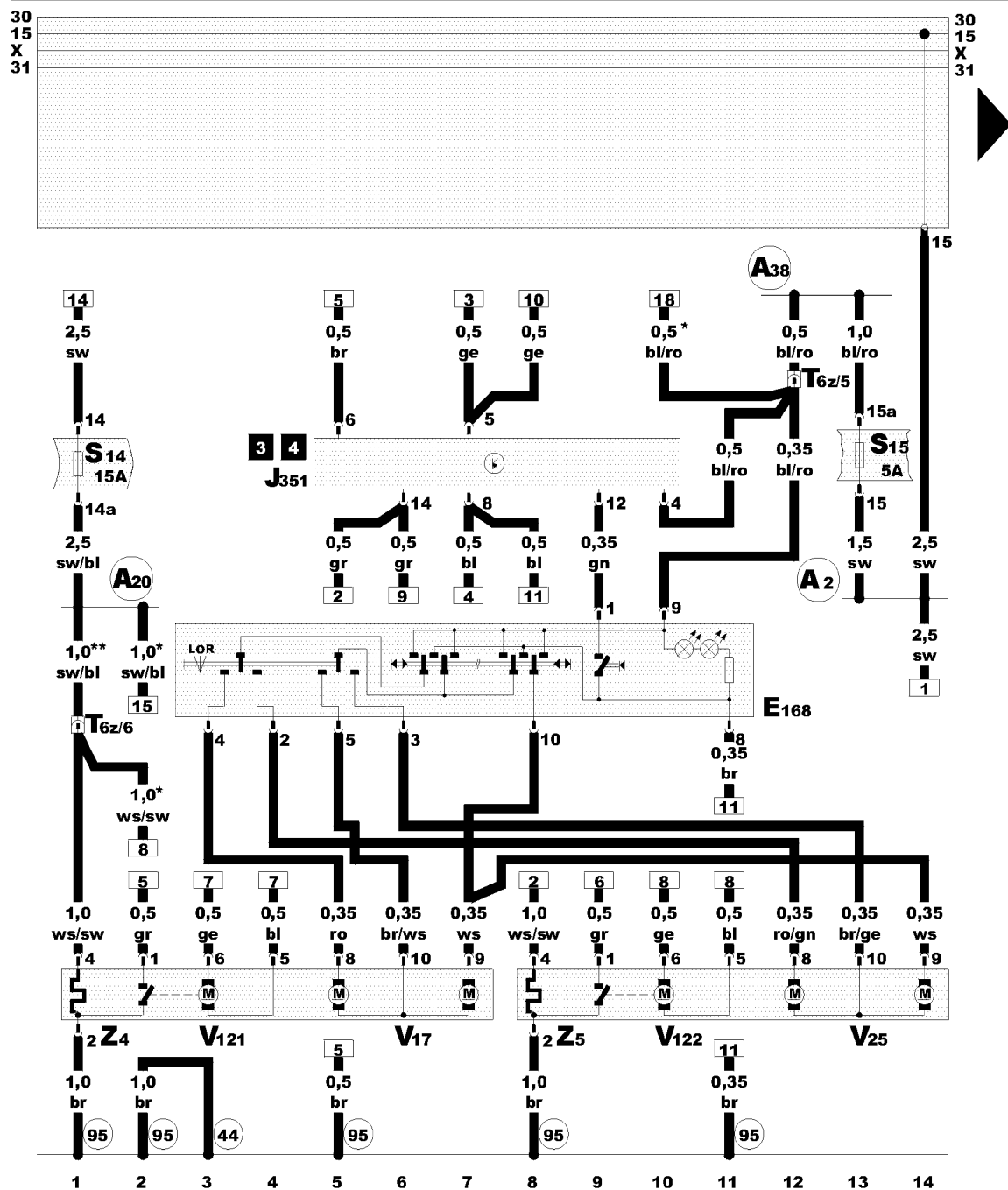
Central electrics - front side



Additional relay carrier II

**Position of relays:**

- 3** - Exterior mirror fold system control unit (J351)
- 4** - Exterior mirror fold system control unit (J351)



Electrically adjustable and heated exterior mirrors, with folding function

- E168 - Mirror with folding function, adjustment switch
- J351 - Exterior mirror fold system control unit
- S14 - Fuse in fuse box
- S15 - Fuse in fuse box
- T6z - 6-pin connector, dark brown, connector point 1
- V17 - Mirror adjustment motor, driver's side
- V25 - Mirror adjustment motor, front passenger's side
- V121 - Folding mirror motor, driver's side
- V122 - Folding mirror motor, front passenger's side
- Z4 - Heated exterior mirror, driver's side
- Z5 - Heated exterior mirror, front passenger's side

- (44) - Earth point, lower part of left A-pillar
- (95) - Earth connection -1-, in seat adjustment wiring harness
- (A2) - Positive (+) connection (15), in dash panel wiring harness
- (A20) - Connection (15a), in dash panel wiring harness
- (A38) - Positive (+) connection -2- (15a), in dash panel wiring harness

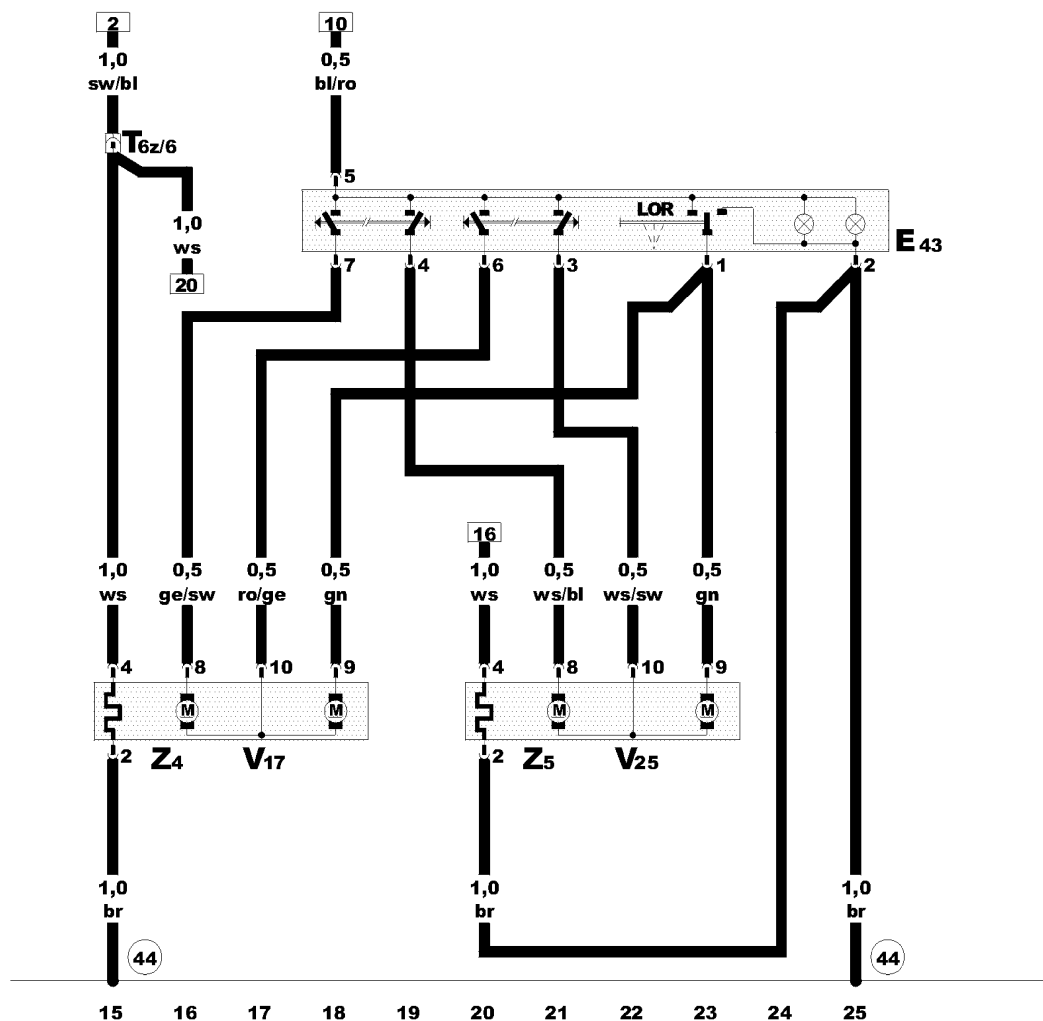
- * - Mirrors without retraction function
- ** - Mirrors with retraction function

ws = white
 sw = black
 ro = red
 br = brown
 gn = green
 bl = blue
 gr = grey
 li = purple
 ge = yellow

Electrically adjustable and heated exterior mirrors,
without folding function

- E43 - Mirror adjustment switch
- T6z - 6-pin connector, dark brown, connector point 1
- V17 - Mirror adjustment motor, driver's side
- V25 - Mirror adjustment motor, front passenger's side
- Z4 - Heated exterior mirror, driver's side
- Z5 - Heated exterior mirror, front passenger's side

- (44) - Earth point, lower part of left A-pillar



ws = white
 sw = black
 ro = red
 br = brown
 gn = green
 bl = blue
 gr = grey
 li = purple
 ge = yellow